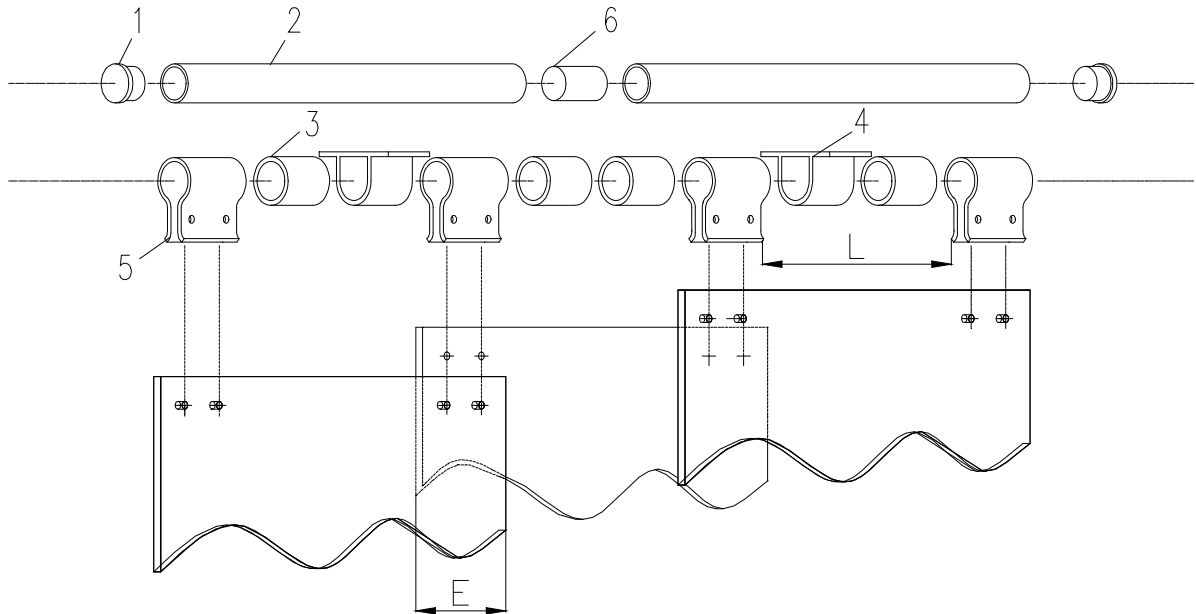


Mounting guidelines PVC strip curtains



1. Compare parts delivered to packing list.

2. **Installation:**

Screw together supporting tubes (2) by means of joining piece (6) tightly (only necessary with regard to a strip curtain width of more than 6 m).

Blank off one tube end with plug (1) and slide pre-assembled holding sleeve (5), plastic tubes (3) and fastening clamps (4) on the supporting tube according to drawing. When doing so join the plastic tubes (respectively plastic tube + fastening clamp) in such a way that the below-mentioned distance "L" is kept. All fastening clamps included have to be distributed at regular intervals on the supporting tube. Fix pre-assembled strip curtain (corresponding to the according attachment). Then screw together the single strips and the holding sleeves (5) (**attention is to be paid to the overlap width "E"**). The terminal strip has to be screwed according to the opening width and to be provided with additional screw holes if necessary.

Size "L" = _____

Overlap "E" = _____

Attachment

