

Mounting instructions for swinging doors models BKM and BKS

Assembly:

Place the complete leaf of the swinging door including the mounted doorframe into the bottom corner of the opening and put it upright towards the opening reveal. Bring it into complete perpendicularity, mark the pilot-drilled holes and drill. Then insert the dowels and fasten the doorframe with screws.

With regard to steel frames, the doorframe can also be welded instead of fastening it with screws.

In case of uneven opening reveals, line the fastening points of the doorframe so that it can be mounted perpendicularly and straight.

With regard to bigger and correspondingly heavy door leaves we recommend unscrewing the doorframe from the leaf before marking the dowel holes. For doing so, release the top or bottom bearing of the door.

Adjusting the closing spring:

The closing spring mounted at the top of the swinging door leaf (1) has already been prestressed by the factory. In case the locking or closing pressure is insufficient, the pressure of the closing spring can be increased accordingly.

For this, insert tensioning mandrels (diameter 8/10) or screwdrivers into the provided drill holes of the upper driver (2). Remove the driving pin (3). This is made easier if the tension is slightly increased by means of the tensioning mandrel, thus leading to a relief.

Now the tension is increased by distorting the driver clockwise (seen from the top - in direction of arrow). Insert the driving pin again after the tensioning process. The tension is released in reverse order.

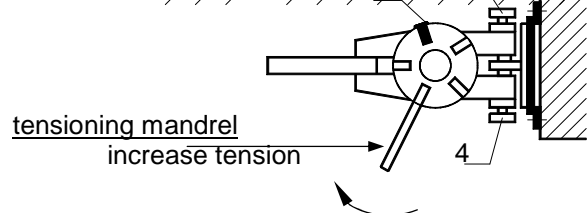
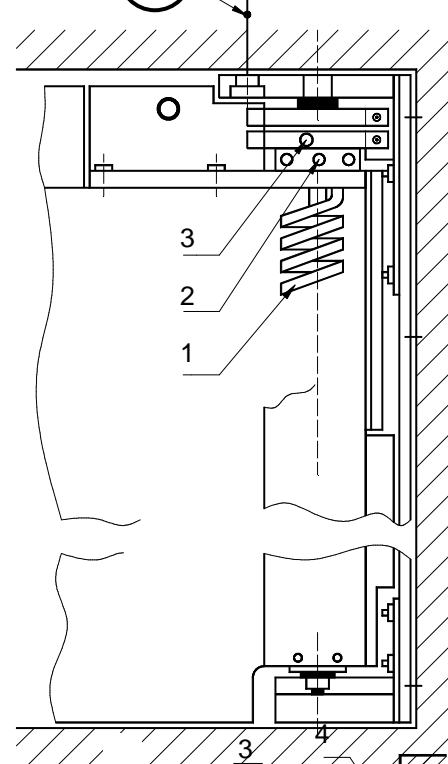
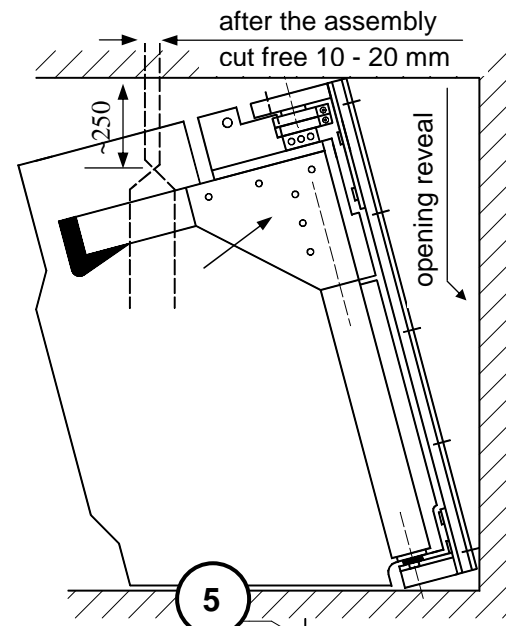
Adjusting the door leaf:

Adjust the center position of the swinging door leaves by releasing or tightening the adjusting screws (4) and fix by means of the lock nut.

In order to save the door leaves after the assembly, it is necessary to cut free an approx. 10 - 20 mm wide and approx. 250 mm long space in the top middle area of the door leaf linings.

Notice:

To stabilize the top door bearing it is absolutely necessary to fasten the lintel with screws.



pos. 4 adjust backlash-free, readjust and fix